

FASSI

F545RA.2.26 xe-dynamic - Load Diagram

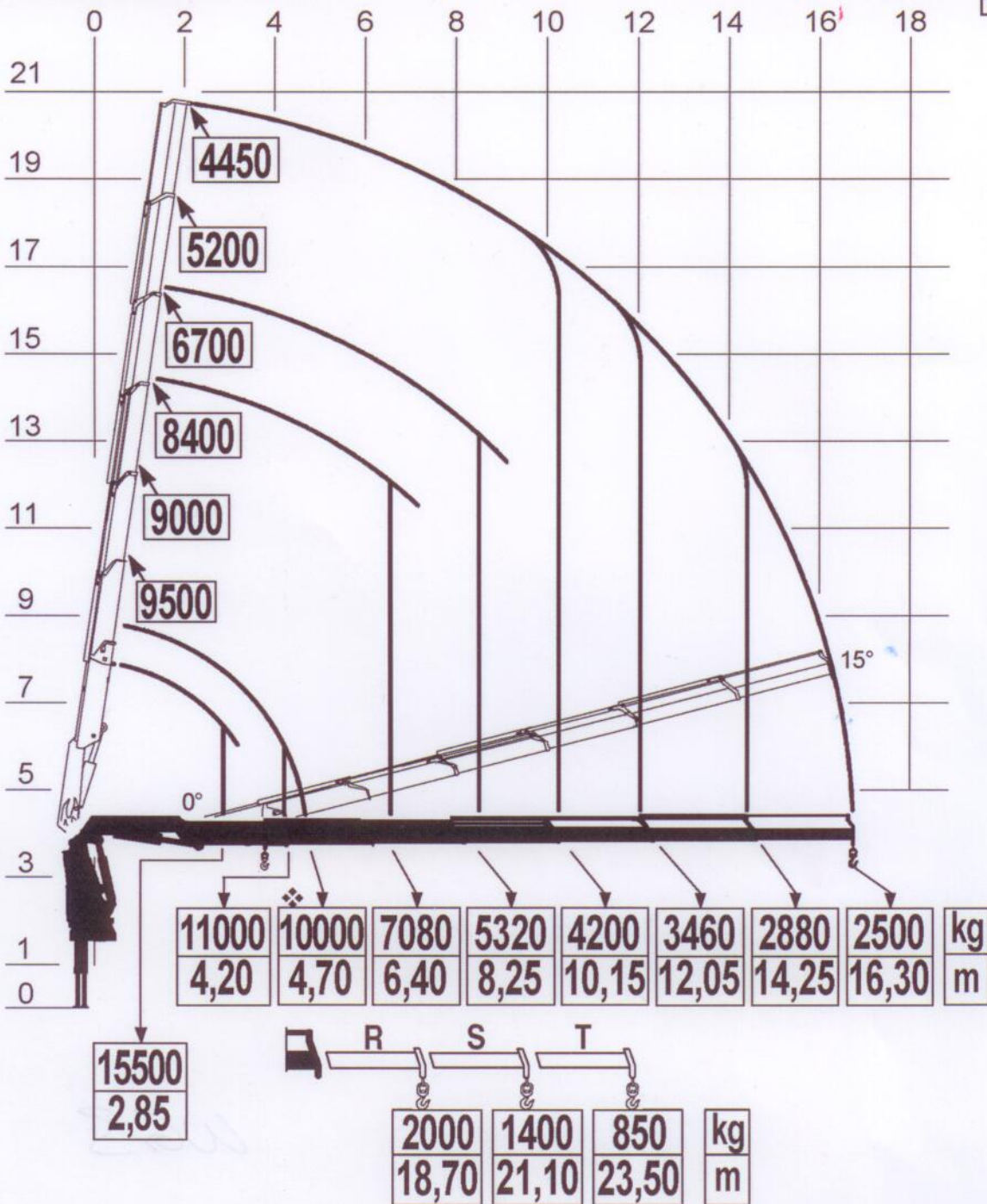
Via Roma, 110
 14021 Albino (BG)
 Tel.: +39 035 776400
 Fax: +39 035 755020
 www.fassi.com
 fassi@fassi.com

LOAD DIAGRAM WITH LIFTING MOMENT LIMITING DEVICE

DE 15852

FASSI

F545RA.2.26



❖ Mmax ⚙ Pmax ⚙ Pmax ⚙ Pmax

461 kNm 15500 kg 11000 kg 2000 kg (kg) R (95) S (70) T (45)

